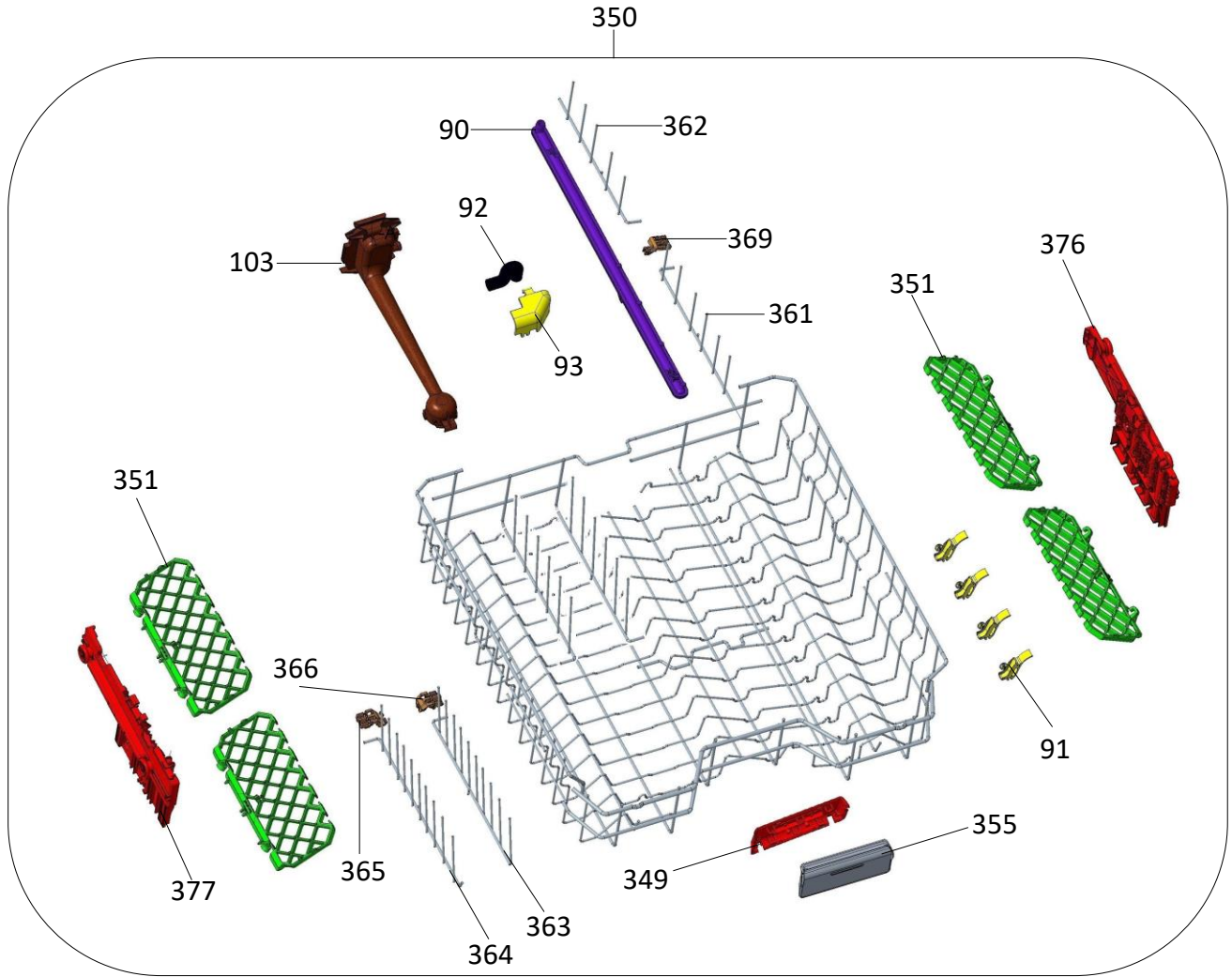
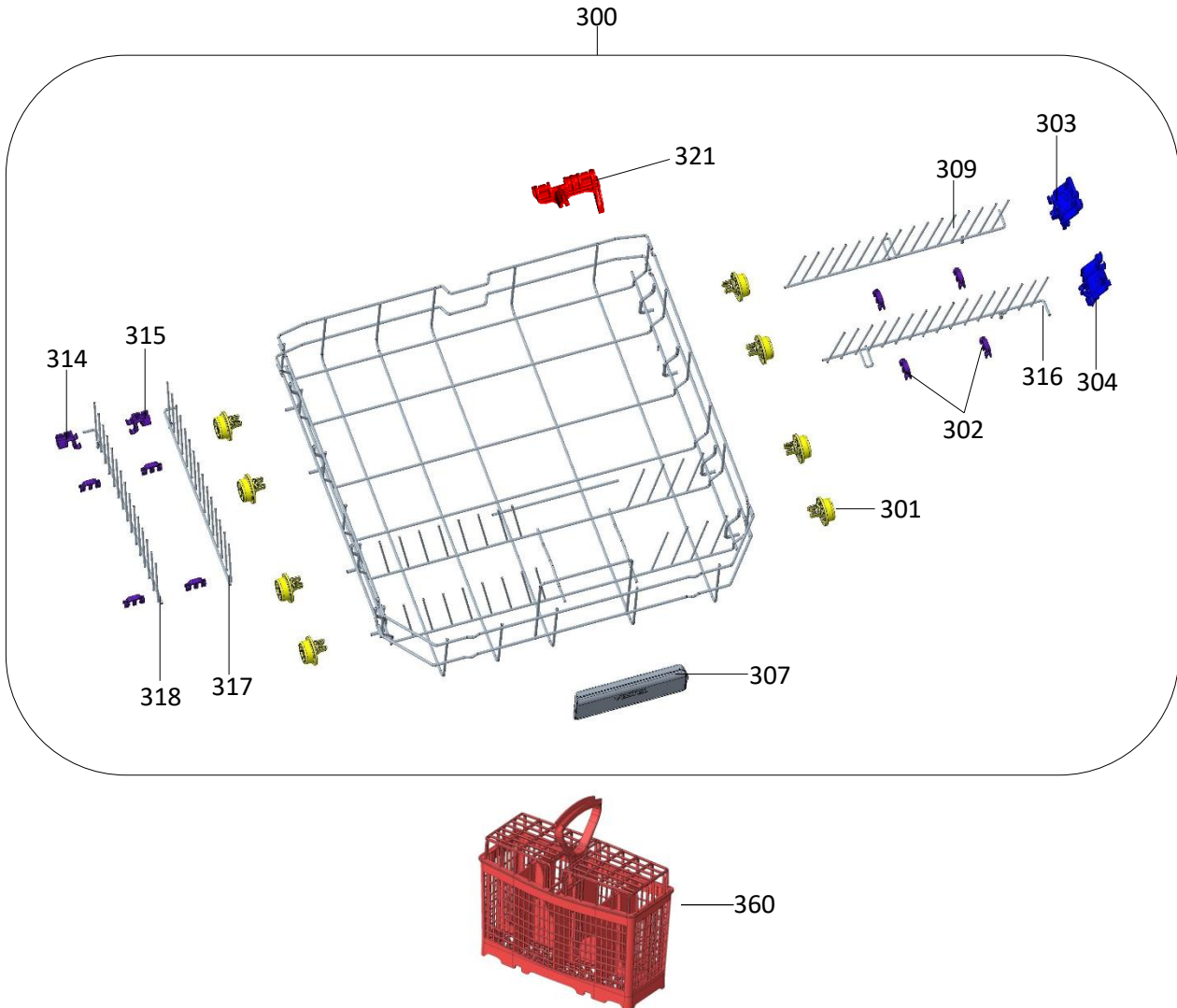


NO	PART NAME	NUMBER
42	SCREW PT3,5X9 YSB	4
200	CONTROL PANEL GROUP (INCLUDES POS NOS 42-201-419)	1
201	CONTROL PANEL	1
203	HANDLE/BEGONIA CLS	1
408	DISPLAY CARD	1
419	DISPLAY BOX/ANGEL/A4-V2	1
420	DISPLAY COVER/ANGEL	1

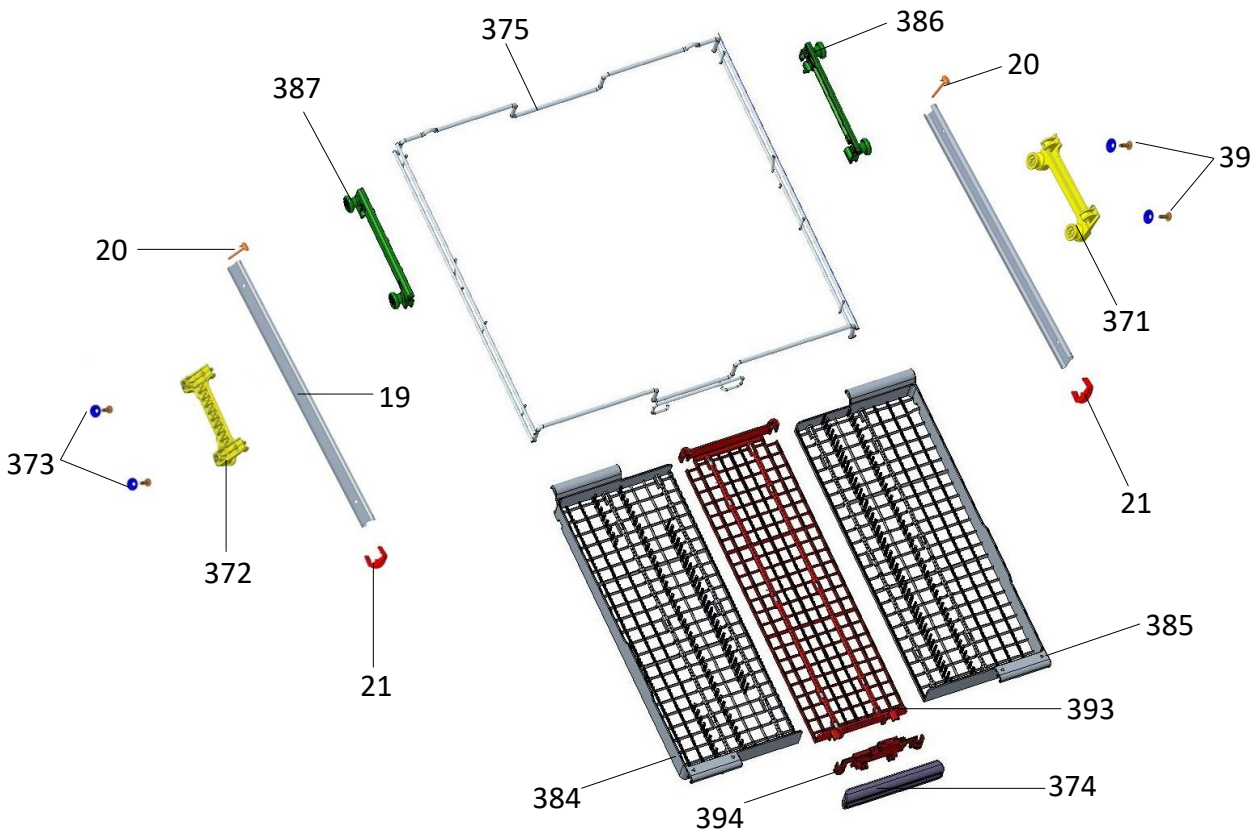


NO	PART NAME	NUMBER
90	DIRECT WASH SHAFT GR	1
91	DIRECT WASH TILT WALL RAL 3002	4
92	DIRECT WASH HOSE-YAM	1
93	DIRECT WASH HOSE COVER-3 YAM	1
103	UPPER SPRAY ARM SUPPORT GR/MULTI/3 YAM	1
349	UPPER BASKET HANDLE-3-BACK	1
350	ÜSG-V2/DWK-6YT/DYA3K-4A-KK-T3G	1
351	UPPER BASKET MUGSHALF GR-TPE	4
355	ÜST SEPET TUT GR-3-GRİ MTL EST	1
361	FOLDING SPIKES-RIGHT FRONT/V2	1
362	FOLDING SPIKES-RIGHT BACK/V1-V2	1
363	FOLDING SPIKES-MIDDLE FRONT/V2	1
364	FOLDING SPIKES-LEFT FRONT V1-V2	1
365	FOLDING SPIKES MECHANISM-1	1
366	FOLDING SPIKES MECHANISM-2	1
369	FOLDING SPIKES MECHANISM-3	1
376	HAM GR-RIGHT/3KDM/RED/UVC	1
377	HAM GR-LEFT/3KDM/RED/UVC	1



NO	PART NUMBER	NUMBER
300	LBG(3SP)-FOLDABLE RACKS-HND/INOX/15(AVP)	1
301	LOWER BASKET WHEEL GR-2-RAL 7046	8
302	FOLDABLE COMBS HOLDER PLS-RAL 7046	8
303	FOLDING SPIKES MECHANISM-RIGHT RAL 7046	1
304	FOLDING SPIKES MECHANISM-LEFT RAL 7046	1
307	LOWER BASKET HANDLE-3- PATTERN-GREY	1
309	FOLDDOWN COMB-RIGHT-BACK-R7452/15K	1
314	PER FOLDING SPIKES MECH-LEFT RAL 7046	1
315	PER FOLDING SPIKES MECH-RIGHT RAL 7046	1
316	FOLDDOWN COMB-RIGHT-FRNT-R7452/15K	1
317	FOLDDOWN COMB-PER-RIGHT-FRNT-R7452/15K	1
318	FOLDDOWN COMB-PER-LEFT-FRNT-R7452/15K	1
321	LOWER BASKET STOPPER	1
360	UNIVERSAL CUTLERY GR-2/GREY	1

VESTEL	VESTEL DISHWASHER	CUSTOMER SUPPORT
	MOVABLE 3. BASKET GROUP	



NO	PART NAME	NUMBER
19	UPPER BASKET RAIL(458*0,8*50)	2
20	UPPER BASKET STOPPER-REAR-RAL 7046	2
21	UPPER BASKET RAIL LOCK-FRONT-2	2
39	SCREW PT5X20 TORX WITH RONDELA/GEOMET	4
371	3.BASKET BRACKET GR-RIGHT	1
372	3.BASKET BRACKET GR-LEFT	1
373	3.BASKET BRACKET WASHER	4
374	3. MOVABLE RACK HANDLE GR MTL-GREY	1
375	MOVING 3.SP WIRE FRAME GR	1
384	LEFF SIDE RACK GR	1
385	RIGHT SIDE RACK GR	1
389	MOVABLE 3. BASKET GROUP	1
393	MIDDLE SIDE RACK GR/RED	1
394	3SP HAREKETLİ MEKANİZMA GR	1
395	3SP WIRE FRAME GROUP (375-386-387)	1

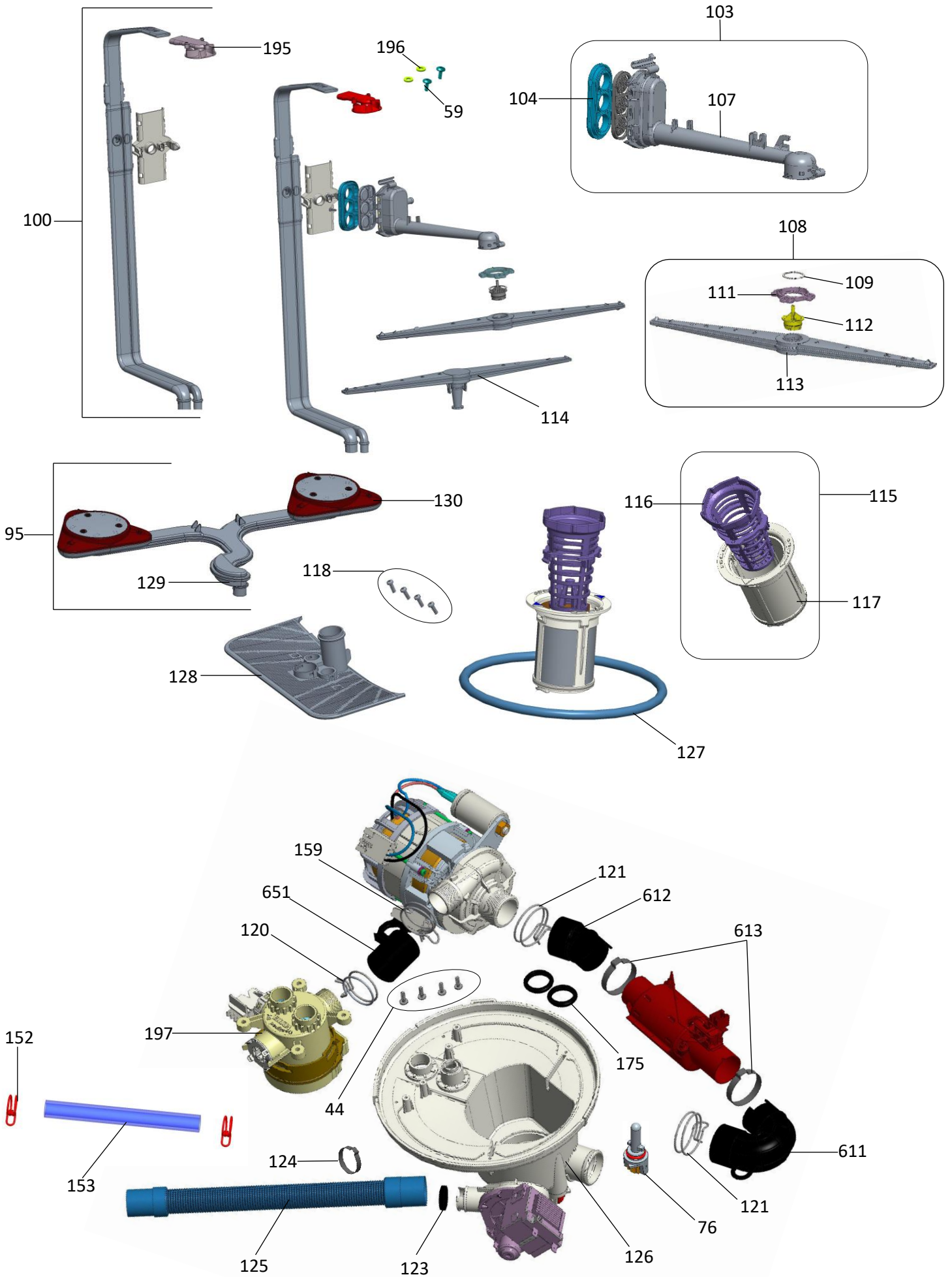
NOTE: 389 poses number 374-375-384-385-386-387-393-394 pos numbered pieces contains.

395 poses number 375-386-387 pos . numbered pieces includes.

VESTEL

VESTEL DISHWASHER UPPER HYDROLYIC GROUP

CUSTOMER SUPPORT



VESTEL**VESTEL DISHWASHER
UPPER HYDROLIC GROUP****CUSTOMER
SUPPORT**

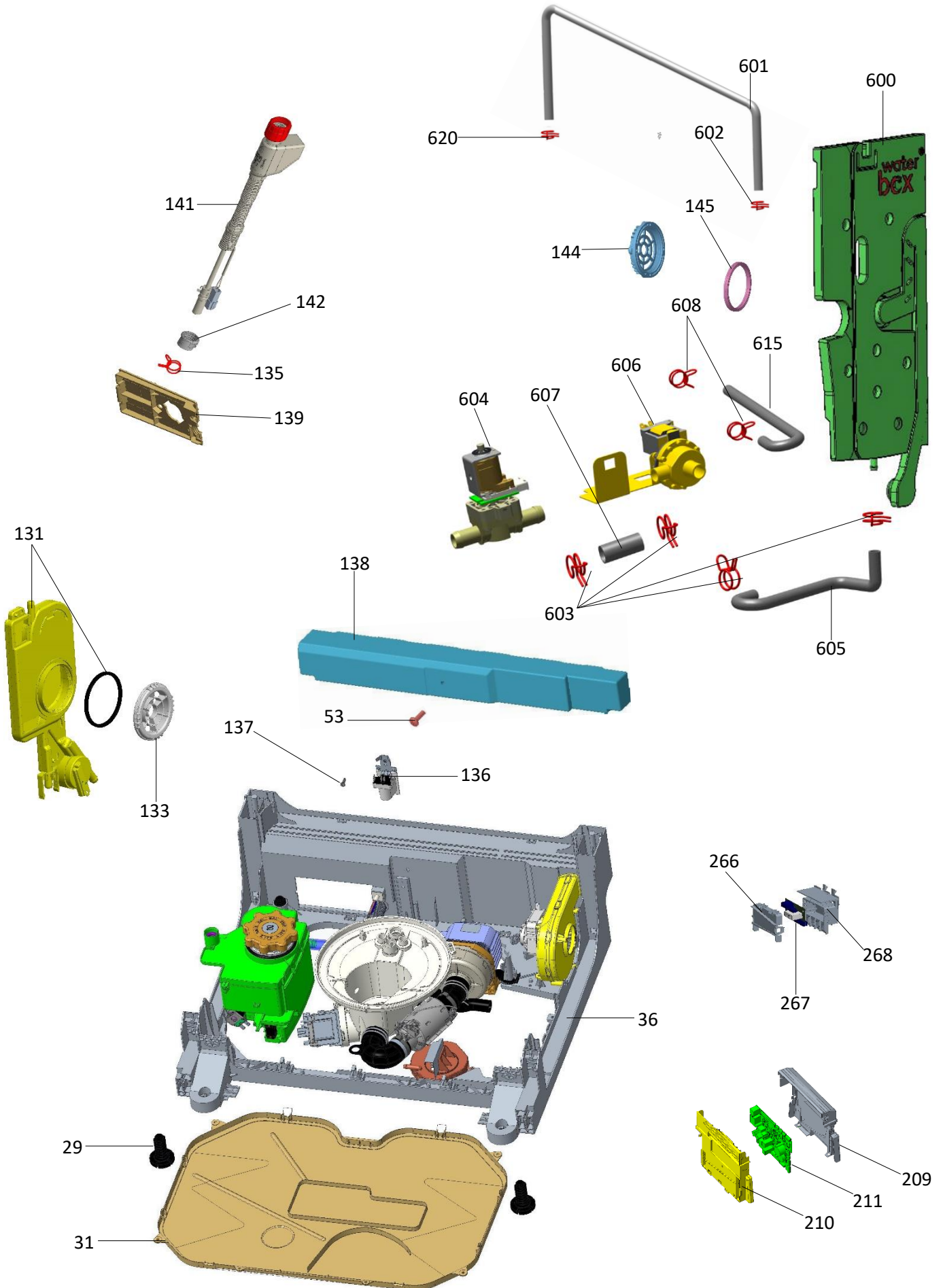
NO	PART NAME	NUMBER
44	SCREWPT4X12YSB	4
59	NTC/SLIM	2
76	SUB-FEEDING CHANNEL-TW FISCH/RAL 3002	1
95	SCREW PT4X7 PAN HEAD COLLER CROSS INOX	1
100	UPPER SPRAY ARM FEEDING CANAL GR/MLTI/C1	1
103	UPPER SPRAY ARM SUPPORT GR/MULTI/3 YAM	1
104	UPPER SPRAY ARM ADAPTER COVER SEAL MULTI	1
107	UPPER SPRAY ARM SUPPORT 3 MULTI	1
108	UPPER SPRAY ARM GR-RAL 7046/2(MULTI)	1
109	UPPER SPRAY ARM NUT PLS D28XT1,2	1
111	UPPER SPRAY ARM NUT-RAL 7046	1
112	UPPER SPRAY ARM SHAFT WITHOUT O-RING	1
113	UPPER SPRAY ARM-RAL 7046/2(MULTI)	1
114	LOWER SPRAY ARM-RAL 7046/2	1
115	*MICROFILTER GR-POLYESTER/KRMZ	1
116	COURSE FILTER-RED	1
117	MICROFILTER-POLYESTER/RED	1
118	SCREW PT4X12 YSB INOX	4
120	CLAMP Dmax36,4X14	1
121	CLAMP Dmax41X14,8	2
123	KLAPE	1
124	HOSE HANDCUFFS D30	1
125	DRAIN HOSE 200 CM	1
126	SUMP	1
127	SUMP SEAL	1
128	SPRAY ARM SUPPORT 2/FOUR EXIT	1
129	LOWER FEEDING CANAL GR	1
130	TRIPLE WASH SPRAY GR RAL 3002	2
152	CLAMP Dmax19,6X8,8	2
153	HOSE D12*3*160 PVC WITHOUT CORD	1
159	HOSE HANDCUFFS D37	1
175	HEATER CASING O-RING/MULTI	4
195	IMPELLER GR	1
196	TOP TUB RUBBER	2
199	SUMP GR/60/FT/DIV-SGK/MULTI/VP	1
611	HOSE HEATER-SUMP/45	1
612	HOSE BLDC HEATER-FT/FT/45	1
613	HOSE HANDCUFFS/FLOW THROUGH	2
651	HOSE(BLDC-DIVIZÖR/FT)/45	1

NOTE: POOL GROUP PART NUMBER 199 CONTAINS PARTS WITH POSITION NUMBER 123-44-153-152-175-126-197-76.

VESTEL

VESTEL DISHWASHER LOWER HYDRAULIC GROUP

CUSTOMER SUPPORT

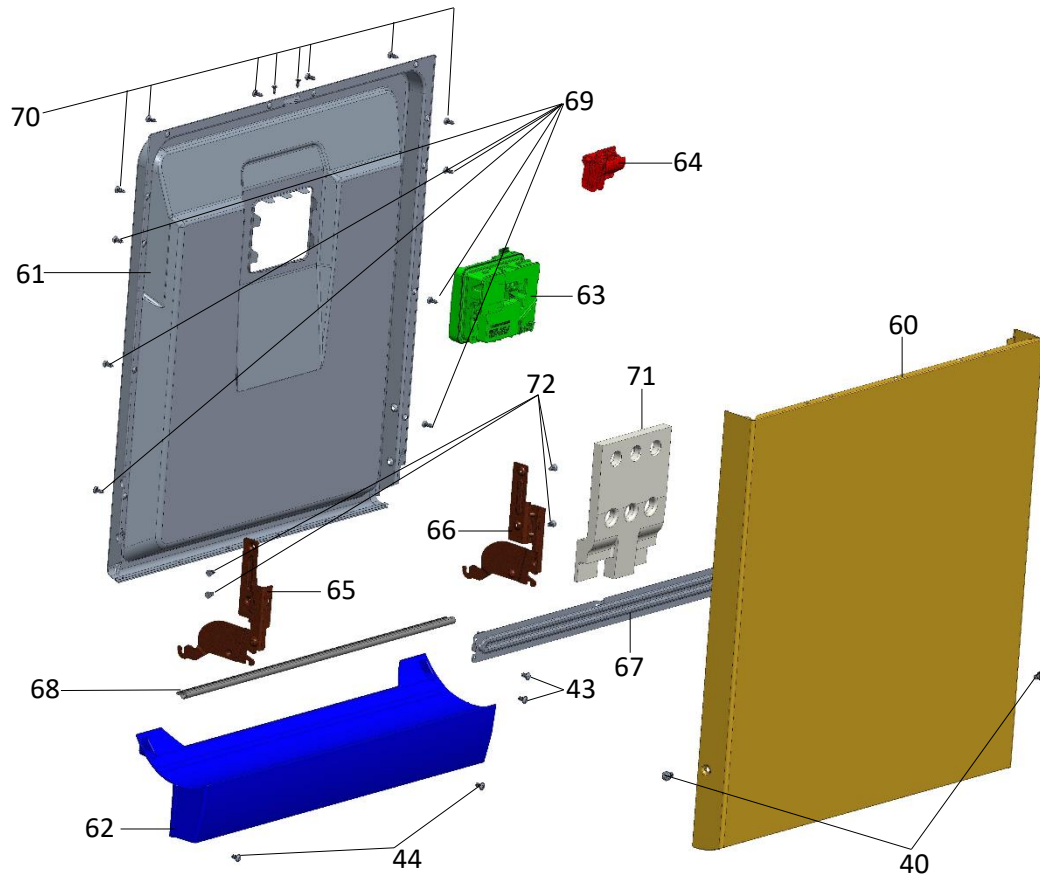


VESTEL**VESTEL DISHWASHER
LOWER HYDRAULIC GROUP****CUSTOMER
SUPPORT**

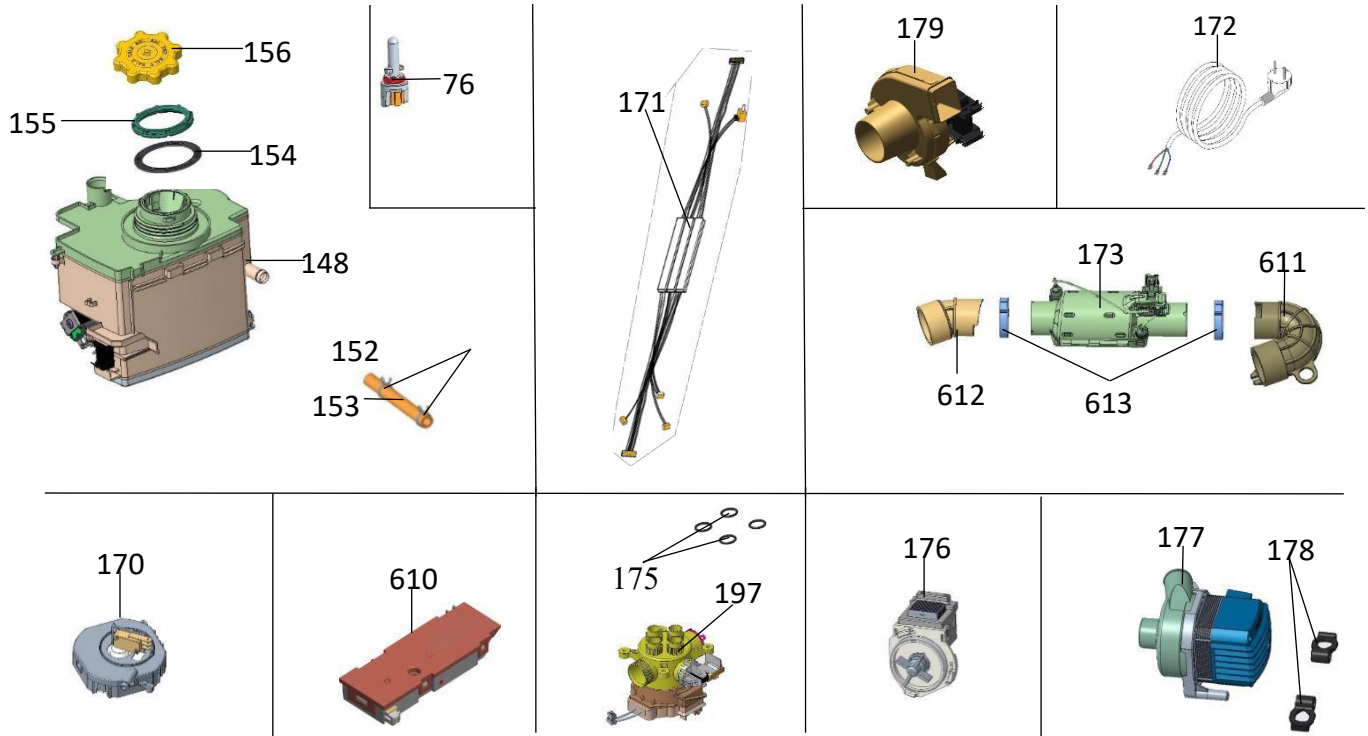
NO	PART NAME	NUMBER
29	ADJUSTABLE FOOT-3	2
31	LOWER COVER/YH	1
36	BASEMENT/FS-13	1
53	SCREW PHCC 4.2*32	1
89	BASEMENT GROUP (29-36-89-137-170 CONTAINS POSITION NUMBERS)	1
96	TP SAFETY HOSE GR (139-141-142 CONTAINS POSITION NUMBERS)	1
131	COMPACT AIR BREAK GR	1
133	AIR BREAK NUT RAL-UV	1
135	CLAMP Dmax16,8x8,4	1
136	NOISE FILTER/RLC	1
137	SCREW PT3X9 YSB	1
138	CONCRETE WEIGHT-5 KG/YPL	1
139	BASEMENT HOSE.CON.PLS.	1
141	TP SAFETY HOSE-2	1
142	SAFETY HOSE HOLDER	1
144	ACTIVE/CONDENSER UNIT NUT-UV	1
145	ACTIVE/CONDENSATION UNIT SEAL	1
209	PCB BOX/NH	1
210	PCB BOX REAR COVER/NH	1
211	ELEC.CARD VA45_13_W_UVC1=_CL2	1
266	BLDC RELAY BOARD BOX	1
267	ELEK.CARD/UVC+RÖLE/20BM16/23676896	1
268	BLDC RELAY BOARD COVER	1
600	WATER RECYCLE TANK	1
601	HOSE PVC D9X1,25X900(SGK TANK-AIRBREAK)	1
602	CLAMP Dmax13,1X7,3Y.LI(SGK PVC HORTUM)	1
603	CLAMP Dmax18,7X9,6Y.LI(SGK MOT-VALF-TANK)	4
604	BI-DIRECTIONAL VALVE	1
605	HOSE F.LU D13x2,25(SGK VALF-TANK)/YH	1
606	WATER RECOVERY PUMP AND METAL/YH	1
607	HOSE D13X2X37(SGK MOTOR-VALF)	1
608	CLAMP Dmax 21,6X9,9Y.LI(SGK HAVUZ-MOT)	2
615	HOSE F.LU D15x2,5/YH(SGK HAVUZ-MOTOR)/YH	1
618	WATER RECOVERY TANK GR (600-601-602-620 CONTAINS POSITION NUMBERS)	1
619	WATER RECOVERY PUMP GR (603-604-605-606-607 CONTAINS POSITION NUMBERS)	1
620	CLAMP Dmax11,6x6,3Y.LI(AIRB-SGK PVC HORT)	1

VESTEL**VESTEL DISHWASHER
TUBE GROUP****CUSTOMER
SUPPORT**

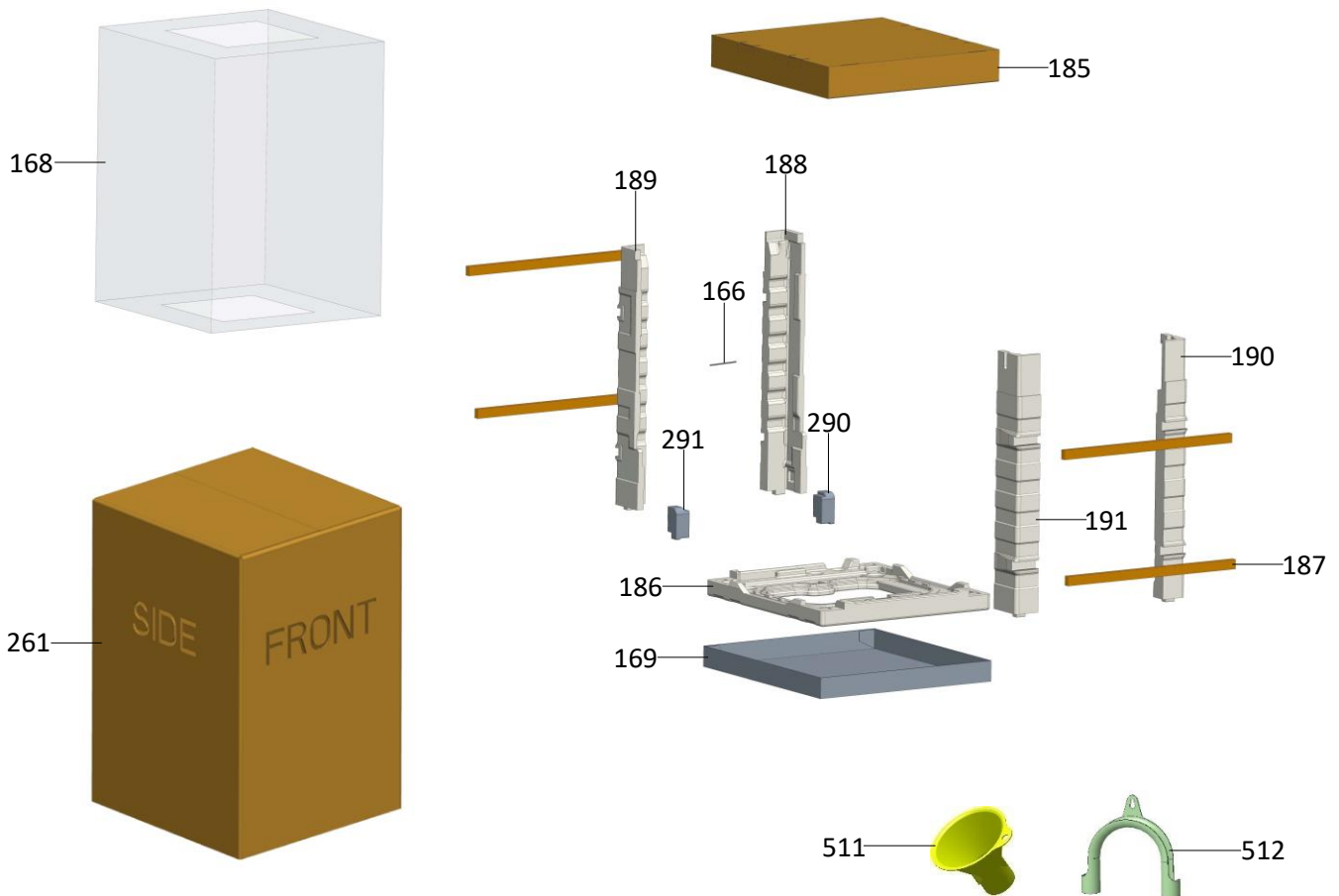
NO	PART NAME	NUMBER
1	TUB ASM-4*4D*4/3B/LIGHT/AUTODOOR/SGK/MUL	1
2	UPPER TRAY GR 5.EST/CON.LI/ZMBL/DS BYL	1
3	FLAT SIDE PANEL GR-RIGHT/DS PR(TSIZ)-2	1
4	FLAT SIDE PANEL GR-LEFT/DS PR(TSIZ)-2	1
5	REAR UPPER PLS.CROSS BAR	1
8	BACK CROSS BAR STYROFOAM-LEFT	1
9	BACK CROSS BAR STYROFOAM-RIGHT	1
10	KESME ÖN CROSSBAR STRAFORU/NEW	1
12	TUB GASKET-60/YH	1
18	DOOR HOOK/PLASTIC	1
19	UPPER BASKET RAIL(458*0,8*50)	4
20	UPPER BASKET STOPPER-REAR-RAL 7046	4
21	UPPER BASKET RAIL LOCK-FRONT-2	4
22	UPPER BASKET RAIL CON.BRA.GR-3	4
23	UPPER BASKET RAIL CON.BRA -REAR	4
24	METAL FILTER-2	1
25	KICK PLATE(60) 600*0,5*234	1
30	HINGE CORD GR-2	2
31	LOWER COVER/YH	1
32	HINGE SPRING(PURPLE)	2
36	BASEMENT/FS-13	1
37	TUB LOWER CORNER STYROFOAM-LEFT	1
38	TUB LOWER CORNER STYROFOAM-RIGHT	1
39	SCREW PT5X20 TORX WITH RONDELA/GEOMET	8
41	SCREW ST 3.9X9.5 PAN HEAD (S)	4
42	SCREW PT3,5X9 YSB	3
43	SCREW M4X10 YSB SPIRAL	2
44	SCREWPT4X12YSB	4
56	UPPER TRAY SUPPORT PART/RIGHT/NEW	1
57	UPPER TRAY SUPPORT PART/LEFT/NEW	1
58	SCREW TT M4*6 YSB-T-F	2
59	SCREW PT5X13 TORX WITH RONDELA	4
87	TOP TUB OF GASKET/R/OKAM	1
88	TOP TUB OF GASKET/L/OKAM	1
137	SCREW PT3X9 YSB	2
371	3.BASKET BRACKET GR-RIGHT	1
372	3.BASKET BRACKET GR-LEFT	1
373	3.BASKET BRACKET WASHER	4
414	OVERFLOW PLASTIC HOSE/PVC/UNSTRUNG	1
415	OVERFLOW PLASTIC	1
416	BOTTOM TUB OVERFLOW GASKET	2
610	OKAM-CROSSBAR MECHANISM GR	1
616	OKAM-HINGE MECHANISM GR-RIGHT	1
617	OKAM-HINGE MECHANISM GR-LEFT	1



NO	PART NAME	NUMBER
40	SCREW M4X6 PAN HEAD SPIRAL (METALIC GREY	2
43	SCREW M4X10 YSB SPIRAL	4
44	SCREWPT4X12YSB	2
60	FRONT PANEL-10(595)/V-INOX/HOLE	1
61	INNER DOOR-YPL ASSEMBLY-2	1
62	PLS KICK PLATE-4/DS(PP MB)	1
63	SLIDE DISPANSER WITH	1
64	DOOR LOCK-2/USA	1
65	HINGE MOV. PART 2-LEFT/COA190*2,5*90/HOT	1
66	HINGE MOV. PART2-RIGHT/COA190*2,5*90/HOT	1
67	HINGE PART BRACKET 2(60)600*0,5*45	1
68	DOOR SEAL-1	1
69	SCREW SAC 3,9X12 YHB INOX	6
70	SCREW PT4X14 YHB INOX	8
71	D20/DOOR SUPPORT STYROFOAM-V1/NPL	1
72	M5X10THB(T.LI)500H/ELF THREADING METRIC	4

VESTEL**VESTEL DISHWASHER
ELECTRICAL COMPONENTS****CUSTOMER
SUPPORT**

NO	PART NAME	NUMBER
76	NTC/SLIM	1
148	CONTAINER OF SALT	1
152	CLAMP (SALT CONTAINER-POOL)	2
153	HOSE (SALT CONTAINER – POOL)	1
154	SALT CONTAINER NUT GASKET	1
155	NUT OF SALT CONTAINER	1
156	SALT CAP GROUP	1
170	FLOATER	1
171	CABLE TREE	1
172	SUPPLY CABLE	1
173	HEATER CASING	1
175	HEATER CASING GASKET (BETWEEN DIVISOR POOL)	4
176	DISCHARGE PUMP	1
177	WASHING PUMP	1
178	WASHING PUMP HANGER	2
179	TURBOFAN	1
197	DIVISOR	1
610	OKAM-CROSSBAR MECHANISM GR	1
611	HOSE HEATER-ECO	1
612	HOSE PUMP HEATER	1
613	TYPE CLAMP/FLOW THROUGH (HEATER)	2

VESTEL**VESTEL DISHWASHER
PACKAGING GROUP****CUSTOMER
SUPPORT**

NO	PART NAME	NUMBER
166	DRAIN HOSE CONNECTING WIRE	1
168	SHRINK(50μM)	1
169	BOTTOM CARTON (OPTIONAL)	1
185	TOP CARTON	1
186	D20/BASE Styrofoam/STD	1
187	WOOD	4
188	REAR BAR STRF-RIGHT	1
189	REAR BAR STRF-LEFT	1
190	BUILT-IN/FRONT BRACKET STRF-RIGHT	1
191	BUILT-IN/FRONT BRACKET STRF-LEFT	1
261	CARTON BOX (OPTIONAL)	1
290	REAR CORNER SUPPORT STORAGE-RIGHT	1
291	REAR CORNER SUPPORT STORAGE-LEFT	1
511	SALT FUNNEL (OPTIONAL)	1
512	DISCHARGE HOSE HANGER (OPTIONAL)	1

NOTE: OPTIONAL PARTS ARE NOT USED ON SOME PRODUCTS.